



# 2025 Age-Friendly Leonia Community Survey

March 2026

Submitted to The Borough of Leonia, New Jersey  
By the Center for Research and Evaluation on Education and Human  
Services (CREEHS) at Montclair State University



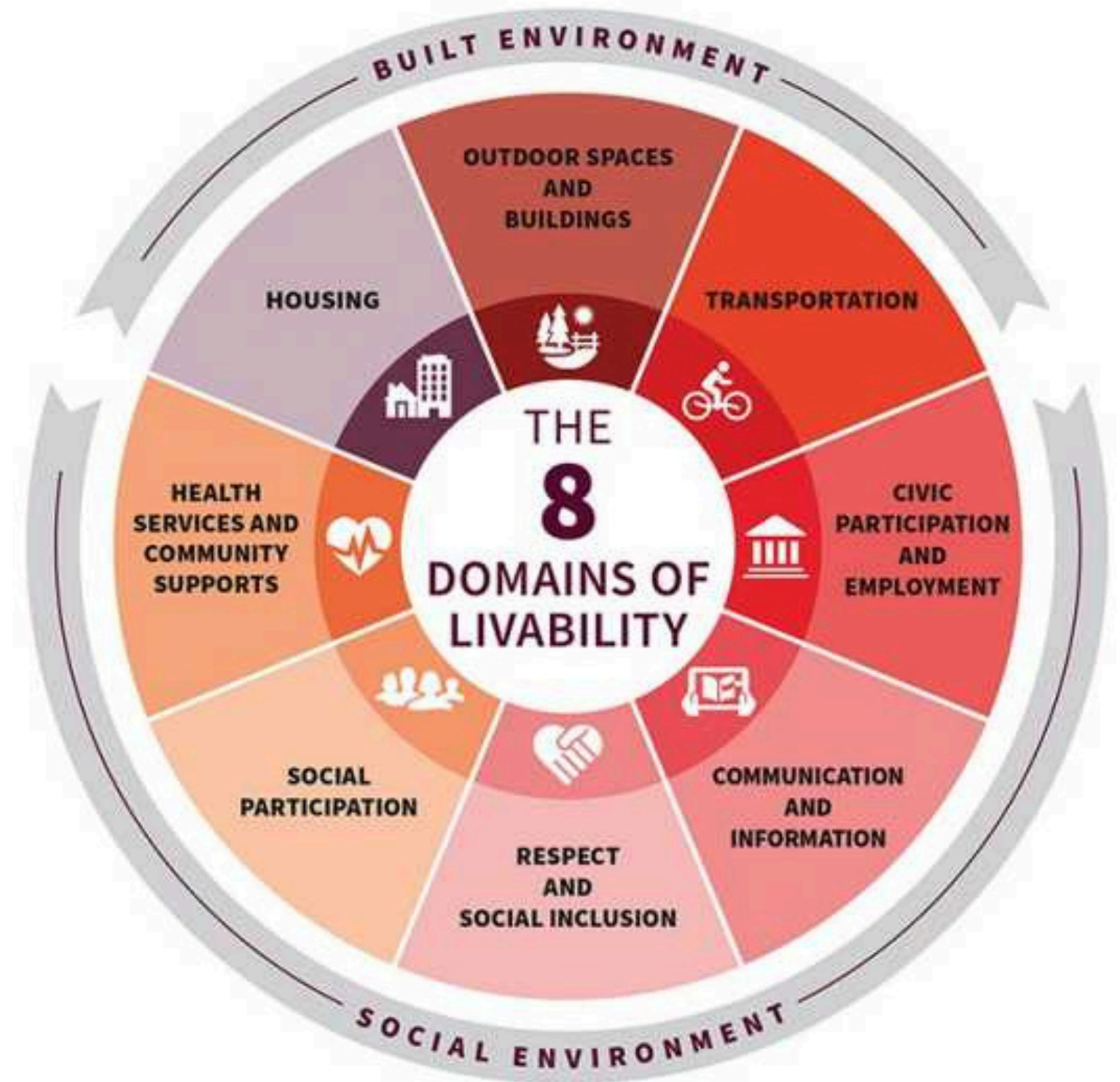
# Introduction

Figure 1. The AARP 8 domains of livability

The Borough of Leonia Mayor's Advisory Committee for Age-Friendly Leonia (AFL) retained the services of the Center for Research and Evaluation on Education and Human Services (CREEHS) to support an age-friendly community assessment that included a survey of adults aged 55 and older. The assessment aligned with the guidance and frameworks of the American Association of Retired Persons (AARP) Network of Age-Friendly States and Communities.

The project took place between August 2025 and February 2026, with funding from AFL via an Age-Friendly Communities Grant from the New Jersey Department of Human Services, Division of Aging Services.

The development of the survey was guided by the 8 Domains of Livability, a framework used by AARP network members to organize and prioritize work. The availability and quality of these features within a community are known to impact the well-being of older adults and people of all ages (Figure 1).

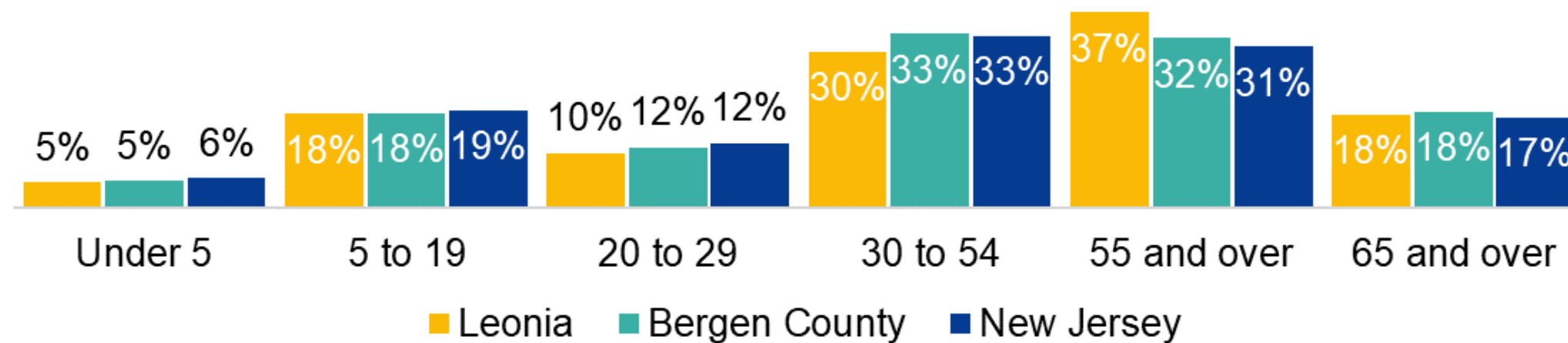


Source:

- AARP's 8 Domains of Livability website: <https://www.aarp.org/livable-communities/network-age-friendly-communities/info-2016/8-domains-of-livability-introduction.html>

# Leonia residents are **more frequently aged 55 years and older** than in Bergen County and NJ

Figure 3. Population by age, ACS, 2024



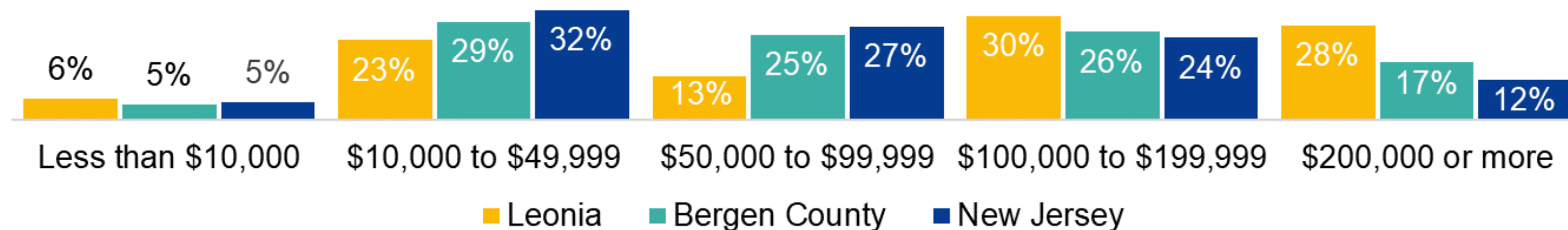
Source: US Census Bureau American Community Survey 5-year estimates (2020-2024)

- As of 2024, more than 3,000 residents in Leonia (approximately 37% of all residents) are aged 55 and older (Figure 3).
- According to the U.S. Census Bureau, the proportion of adults ages 55 and older in Leonia has grown by 50% from 2010 to 2024 (data not shown).
- These trends highlight the need to adapt services and physical environments in the community to support older adults.

## Leonía residents aged 65 and older more frequently report incomes of \$100,000 or more **compared to those in Bergen County and NJ**

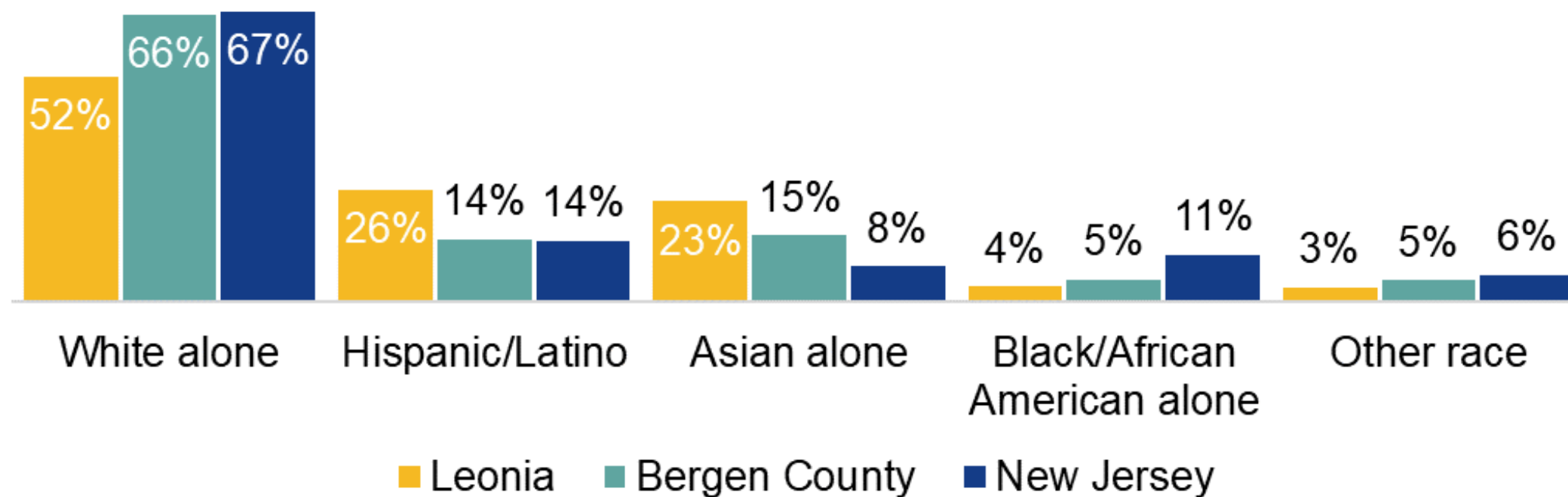
- In 2024, only 4% of Leonía residents aged 65 and older lived below the poverty level, compared to 7% in Bergen County and 9% statewide in New Jersey (data not shown).
- Leonía residents aged 65 and older more frequently have a household income between \$100,000 and \$199,999 (30%), followed by \$200,000 or more (28%), and \$10,000 to \$49,999 (23%) (Figure 8).
- Overall, residents aged 65 and older more frequently have a household income of \$100,000 or greater (58%) compared to Bergen County (43%) and NJ (36%) (Figure 8).

Figure 8. Income of individuals aged 65 and older, ACS, 2024



# Leonia's racial and ethnic make up varies from Bergen County and NJ

Figure 4. Population aged 55 and older by race and ethnicity, ACS, 2024



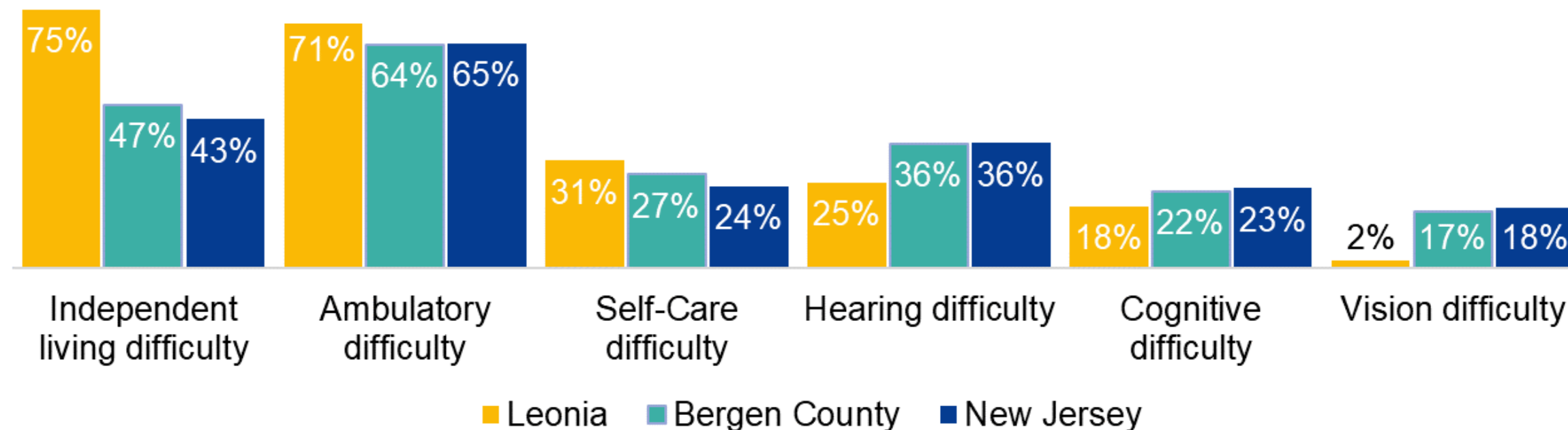
- Leonia residents aged 55 and older are most frequently White (52%), followed by Hispanic (26%) and Asian (23%) (Figure 4)
- Compared to both Bergen County and NJ, Leonia's 55 and older population is more frequently Hispanic (26% compared to 14% Bergen and 14% NJ) and Asian (23% compared to 15% Bergen and 8% NJ) (Figure 4).

Note: Hispanics may be of any race, so they are also counted in applicable race categories.  
 Source: US Census Bureau American Community Survey 5-year estimates (2020-2024)

# Independent living difficulty is the most frequently reported disability among Leonia residents aged 65 and older

- 27% of individuals aged 65 and older in Leonia have a disability (data not shown).
- Difficulty living independently (75%) and moving around (i.e., ambulatory, 71%) are the most frequently reported disabilities among Leonia residents aged 65 and older (Figure 7).
- Individuals aged 65 and older in Leonia more frequently report difficulties with independent living, moving around (i.e., ambulatory), and self-care compared to those in Bergen County and NJ (Figure 7).

Figure 7. Disability type of individuals aged 65 and older, ACS, 2024



# Outdoor Spaces and Buildings

- Over **80%** of survey respondents rated the condition of Leonia's public spaces positively, particularly parks, streets and community buildings
- **27.6%** of respondents pointed out a need for more benches in public places

# Transportation and Pedestrian Safety

- Older Leonians remain active with **85%** of respondents reporting that they drive themselves. Others rely on family or friends, a care service or use the Leonia Senior Bus
- **27.6%** pointed out a need for more benches in public areas
- Residents identified a need to provide well-lit, accessible streets and intersections and additional handicapped parking
- They asked for better enforcement of speed limits and traffic signs
- They expressed concerns about e-bikes, scooters and bikes going at high speed on sidewalks

# Housing

- **93.1%** of respondents reported that remaining in Leonia is somewhat to extremely important
  - **65%** of the respondents rated Leonia's housing affordability as "poor" or "fair"
- **75%** of respondents reported difficulty living independently as compared to **47%** in Bergen County and **43%** in the state
  - They need support with lawn and garden care, snow removal, placing trash and recycling at the curb and household chores

# Social Inclusion, Civic Participation and Engagement

- **79%** of respondents had a sense that older adults are welcomed and valued in the community
- **76.2%** saw Leonia as a place that offers a range of opportunities for you to be social and interact with your neighbors and community
- **78.7%** saw Leonia as a place with opportunities to get involved in local government and advocate issues you care about

# Communication and Information

- **95%** use a Smartphone to access the internet, email or text
  - **84%** use a computer with internet access
  - **60%** use social media
  - They get information from [Leonia Senior Center](#), [Google](#), [BC Div. of Senior Services](#), [Leonianj.gov](#)
- Make it easier for older adults to find information
  - Display community information with large lettering
  - Have community information available in a variety of languages, accessible to those with a disability and available in multiple formats

# Health Services and Community Supports

	Poor	Fair	Good	Very Good	Excellent
Affordable options to health and wellness services	9.0%	32.9%	37.5%	15.9%	4.7%
Access to culturally sensitive health and wellness services	5.0%	30.1%	43.7%	15.9%	5.3%
Classes on nutrition, smoking cessation , weight control	7.2%	25.8%	41.7%	19.4%	5.8%
Availability of mental health services	16.4%	33.3%	34.9%	12.6%	2.8%
Access to health services information in one central place	12.6%	36.5%	31.2%	15.0%	4.7%
Health professionals who speak different languages	7.4%	31.2%	39.6%	15.1%	6.7%
Fitness activities geared toward older adults	6.5%	19.4%	35.5%	26.3%	12.4%

# Age-Friendly Leonia 2025 – 2026 to Date

- Conducted a Community Needs Assessment with 512 responses
- Hosted 25 learning opportunities including 4 sessions on Home Safety for Older Adults
- 12 guest speakers at AFL Committee meetings
- 7 speaking engagements at civic organizations
- 7 appearances at religious congregations
- 6 coalition-building meetings within Leonia
- Worked with the Transportation and Pedestrian Safety Committee to bring 4 NJT bus shelters/benches to Leonia

# Moving Forward

- Developing a 3-Year Action Plan fueled by new funding sources
- Year 1 Initiatives
  - Teen Volunteer Corps
  - Resource Guide in Korean, English and Spanish
  - Age-Friendly Leonia Educational Series

Thank You!

